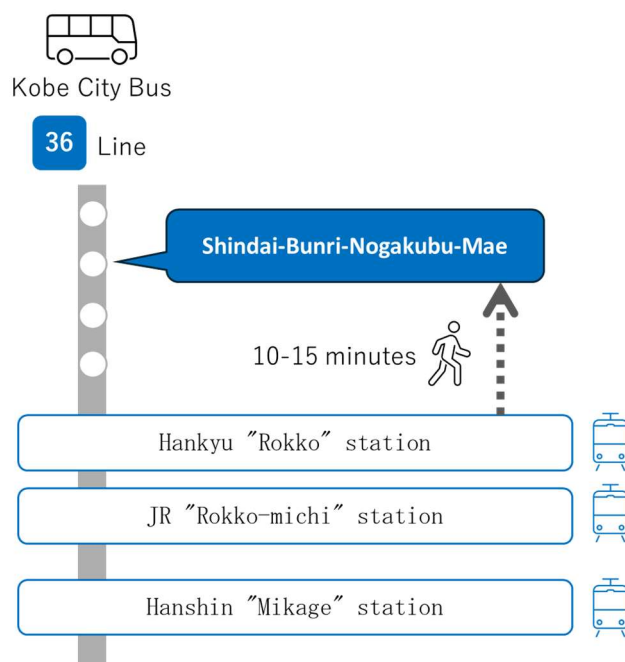


【Guide to Venue】

Kobe University Centennial Hall, 1-1 Rokkodai-cho, Nada-ku, Kobe 657-8501, Japan

[【Google Maps】](#)

<public transportation>



On Foot:

From Hankyu "Rokko" Station: Approximately 15–20 minutes
(Note: The entire route is a steep uphill climb)

By Bus: 230 yen

From
Hanshin "Mikage" Station
JR "Rokko-michi" Station
Hankyu "Rokko" Station:

Take Kobe City Bus Route 36, bound for 'Turukabuto-danchi (鶴甲団地)' or 'Turukabuto-Nichome (鶴甲 2 丁目),' and get off at '神大文理農学部前' (Shindai-Bunri-Nogakubu-Mae), which is shown in English as 'Faculty of Letters and Faculty of Agriculture'.

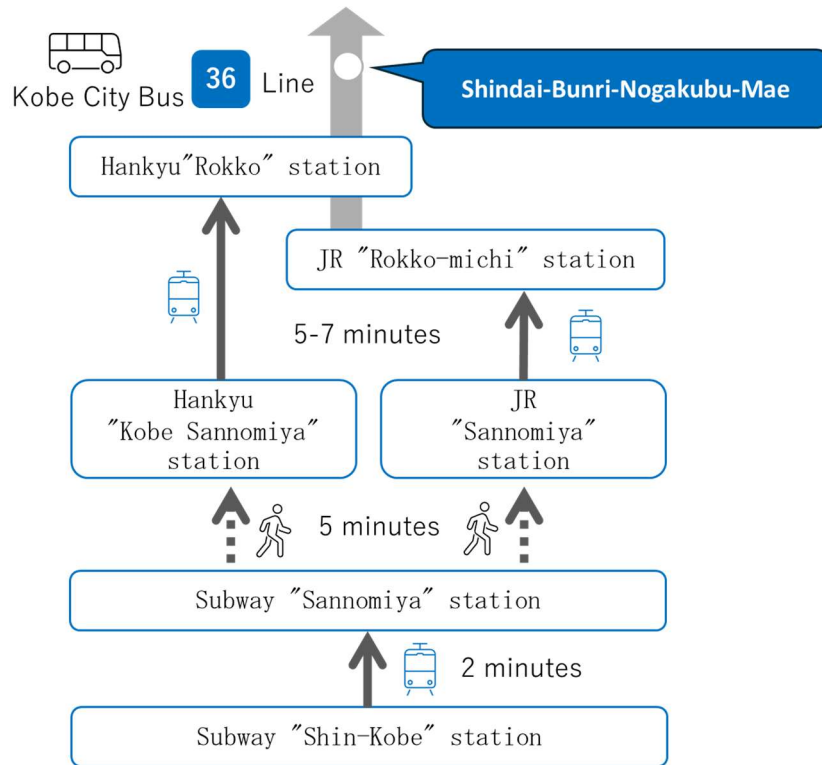
By Cab: Approximately 1,000-1600 yen

From Hanshin "Mikage" Station: Approx. 20–30 minutes
From JR "Rokko-michi" Station: Approx. 10–15 minutes
From Hankyu "Rokko" Station: Approx. 5–10 minutes

◆ANA Crown Hotel Kobe to Kobe University

1. Train: approx. 20 min. + Kobe City Bus: approx. 5 min. /640 yen

See above for directions (by bus or on foot) from the nearest station to Kobe University.



2. Cab: approx. 20 min.

[Uber](#) is available for your convenience.

◆From Kansai International (KIX) to Kobe University about 1 hour and 15 minutes

1. Terminal 1: Bus Stop No.6 (Kobe Sannomiya)
2. Terminal 2: Bus Stop No.4 (Kobe Sannomiya)

Bus operating company (Kansai Airport Transportation Co., Ltd.) website

《[Bus Stop](#)》

《[Timetable](#)》

■ Note: **Most public transportation in Japan does not accept credit cards.** Cash or IC cards are accepted.

Credit cards are accepted on Kobe City Subway, but not on Most trains and Kobe City Bus

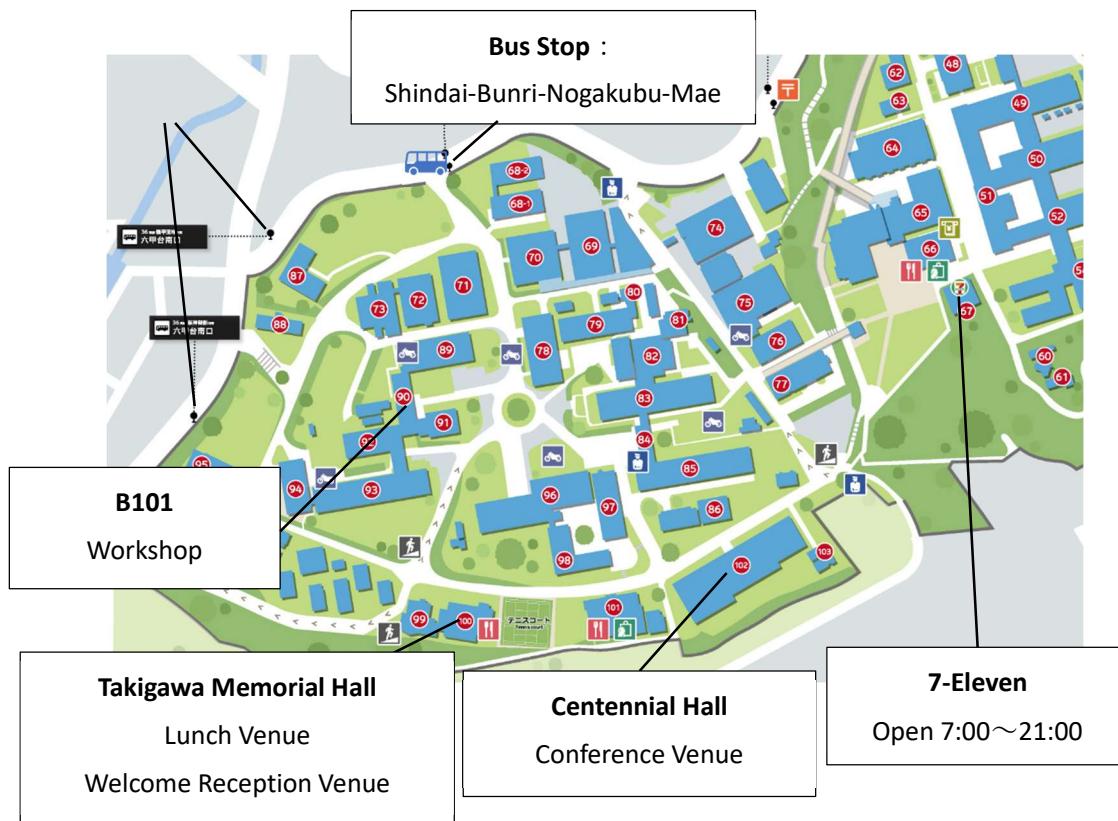
IC cards are convenient and offer a variety of benefits: [KANSAI ONE PASS website](#)

■ How to ride the City Bus and the City Subway

the City Bus: [Click here](#)

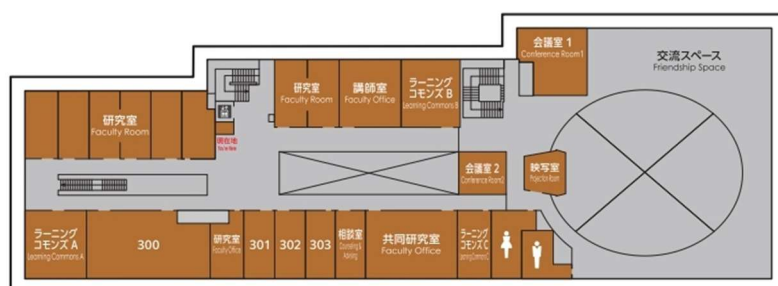
the City Subway: [Click here](#)

【Map around the venue】

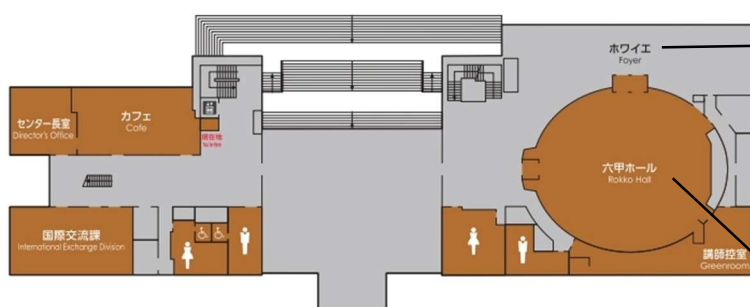


- 7-Eleven near the venue (shown in the map above) Open from 7:00 to 21:00 on both Saturday and Sunday.
- Starbucks in the Centennial Memorial Hall: open Saturday 9:00-17:00, closed Sunday.
- Food is not allowed at the conference venue (Centennial Hall).
- Lunch will be served at the Takigawa Memorial Hall.

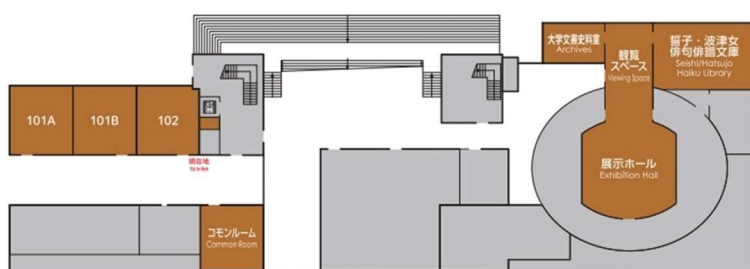
< Venue Map >



3F



2F



1F

【Foyer】

Poster Hall
Sponsor Booths
Coffee Break Corner

【Rokko Hall】

Oral Session Hall

【Wi-Fi in the venue】

- SSID KUVISITOR
- Net Work Key KUVISITORWLAN

When you connect to the above Wi-Fi and launch your browser, you will be asked to authenticate.

Please log in with the following username and password to connect to the Internet.

- Username AIC2025
- Password nyju5735